



PROPANE  
**Aqua-Hot**®  
HYDRONIC HEATING SYSTEM

**375-LP**



# **AHE-375-P02 PARTS MANUAL**



# Table of Contents

## **Section 1: Heater Overview**

---

General ..... Page 5  
Top ..... Page 6-7  
Front..... Page 8-10  
Check Valves ..... Page 11  
Mixer Valve Assembly ..... Page 12  
Propane Connections..... Page 13  
Propane Burner Controls..... Page 14

## **Section 2: Propane-Burner**

---

Overview ..... Page 15-17

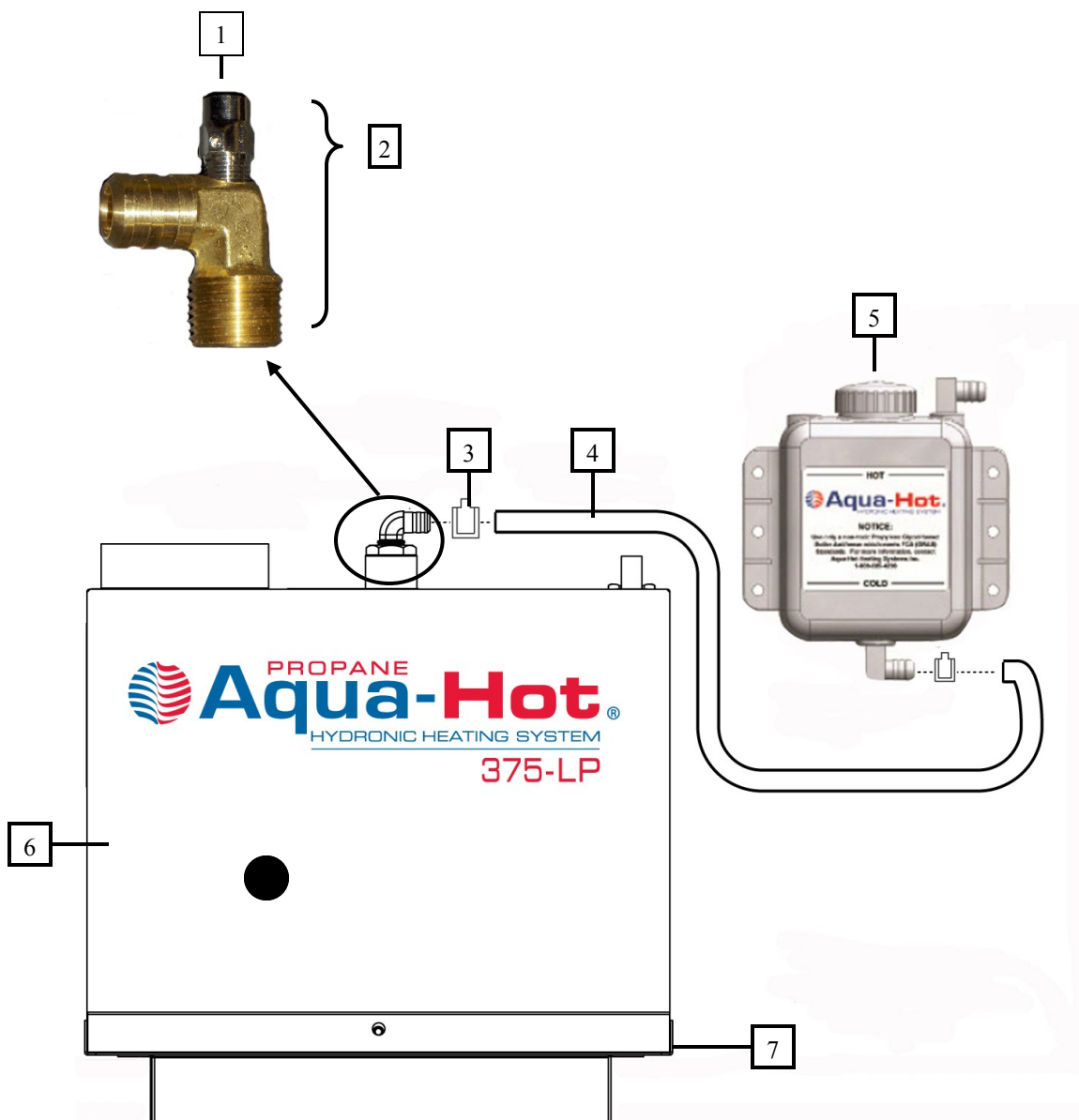
## **Section 3: Misc. Parts**

---

Misc. Parts ..... Page 18

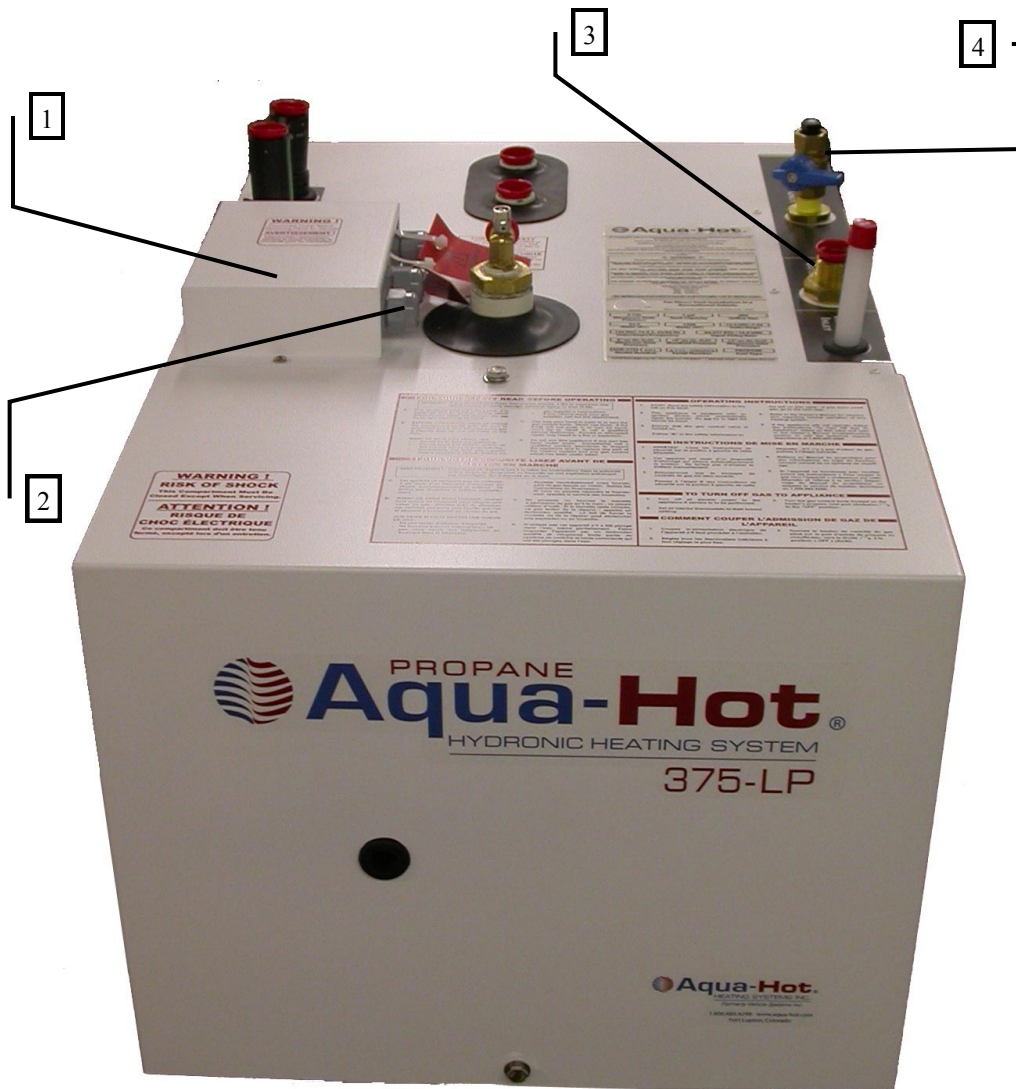


## SECTION 1: HEATER OVERVIEW - GENERAL



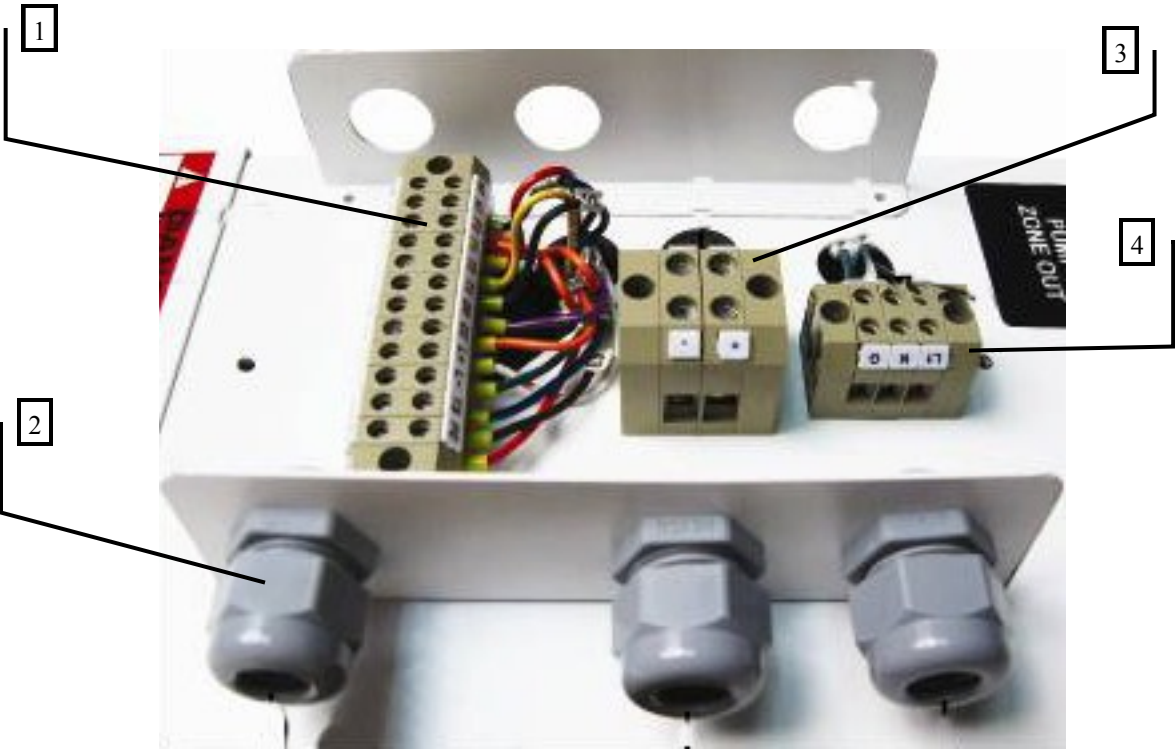
Key	Part Number	Description
1	PLX-007-065	Valve, Air Comb, Coin/Key
2	PLE-007-000	Valve, Air Assembly Comb, Coin/Key
3	PLX-CTB-250	Clamp, Hose Constant Tension
4	PLE-210-191	Tube, Over Flow Clear 5/8 in x 8 ft
5	PLE-063-401	Tank 3 QT. Expansion w/ 5/8 in barbs
6	SME-700-180	Cover, Access
7	SME-700-802	Tray, Mounting, Assembly

## SECTION 1: HEATER OVERVIEW - TOP



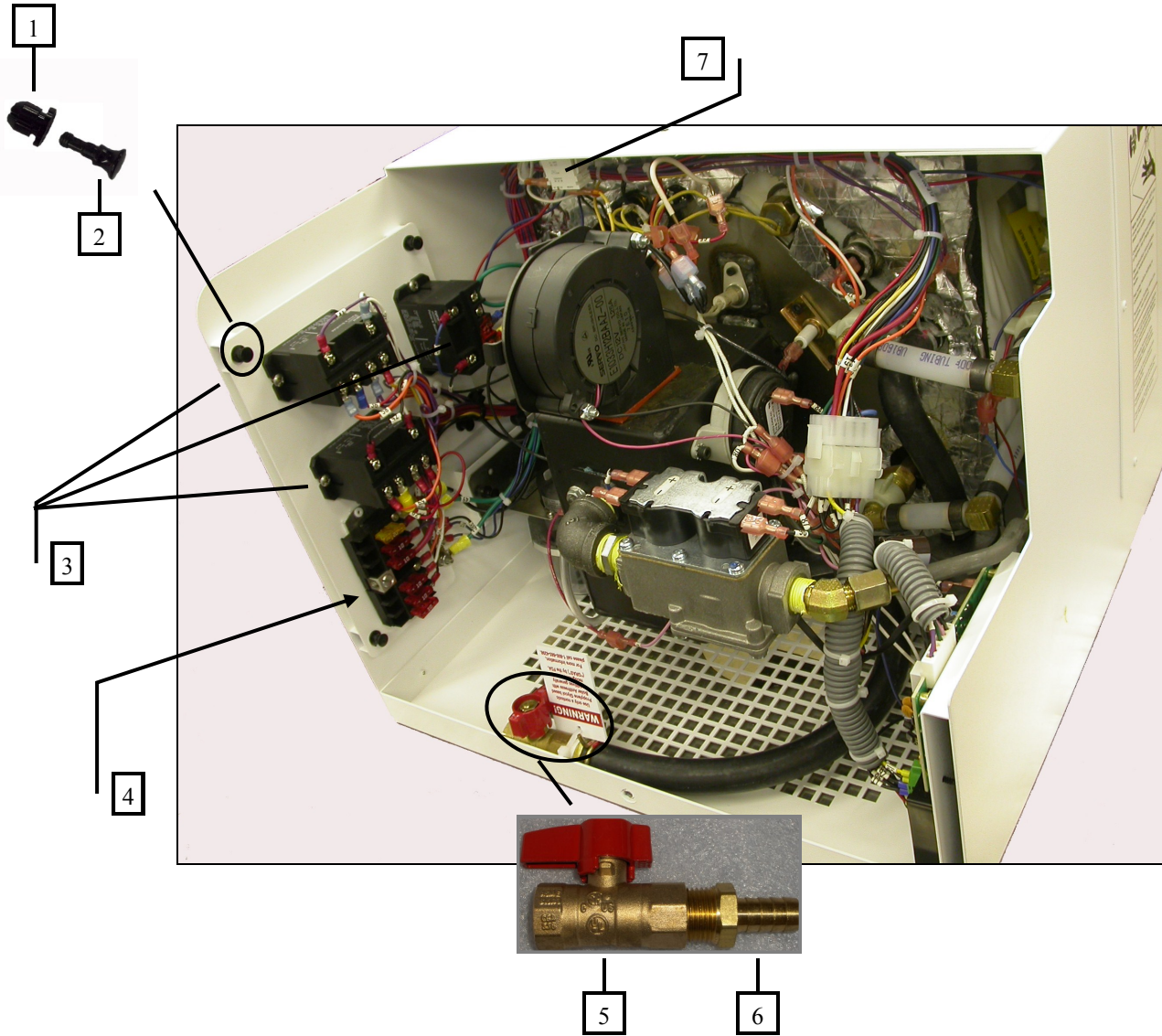
Key	Part Number	Description
1	SME-900-005	Cover, top/back/side assembly
2	HDX-000-623	Clamp, Romex 1/2" Plastic
3	PLE-105-810	Fitting, Bulkhead Mod 1/2 x 1/2 (F)
4	PLX-375-050	Valve, Gas Ball

**SECTION 1: HEATER OVERVIEW - TOP**



Key	Part Number	Description
1	ELE-000-911	Block, Terminal 12 Position 22-12 AWG
2	HDX-000-623	Clamp, Romex 1/2" Plastic
3	ELE-000-900	Block, Terminal 2 Position 22-8 GA
4	ELE-000-905	Block Terminal 3 Position 22-8 GA

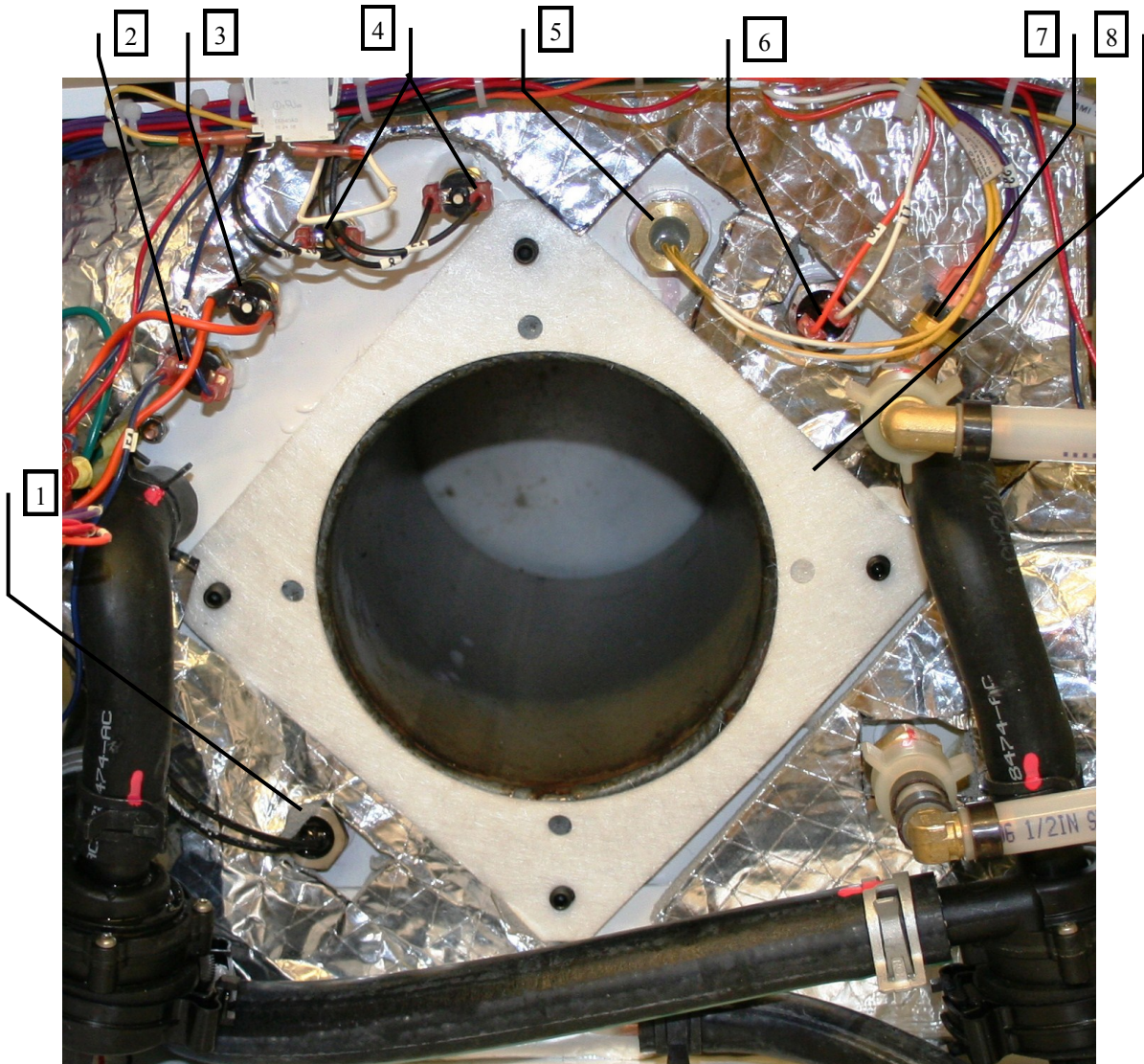
## SECTION 1: HEATER OVERVIEW - FRONT



Key	Part Number	Description
1	HDX-100-100	Grommet, Nylatch
2	HDX-100-200	Plunger, Nylatch,
3	ELX-630-001	Relay, 30A 277 VAC 12VDC Coil
4	ELX-BB6-10A	Fuse Block
5	PLX-BV1-200	Valve, Ball 1/2 in (F) NPT Brass
6	PLX-699-330	Fitting, Brass Barb 1/2 X 1/2 (M) NPT
7	ELX-000-050	Switch, Interlock

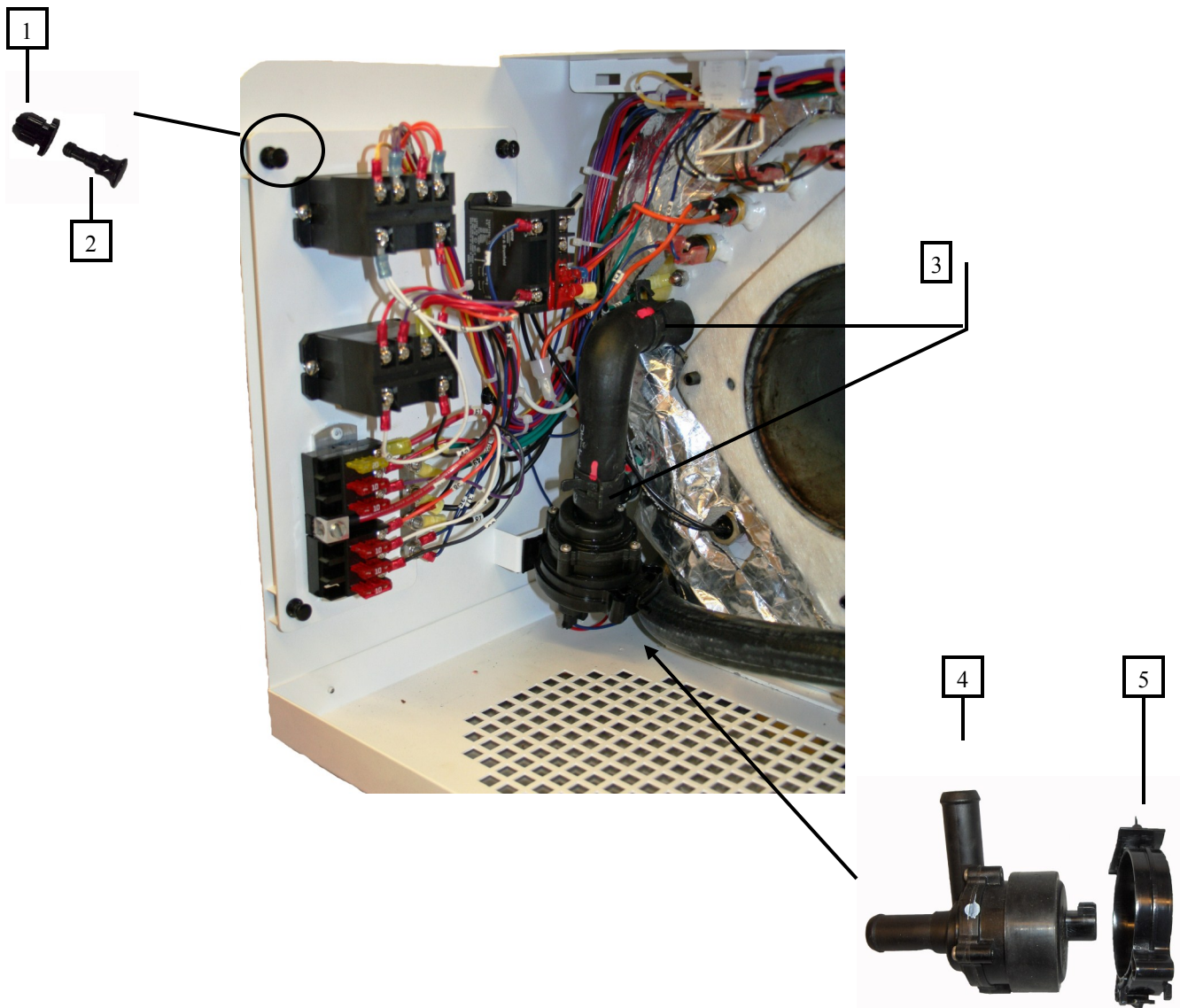


## SECTION 1: HEATER OVERVIEW - FRONT



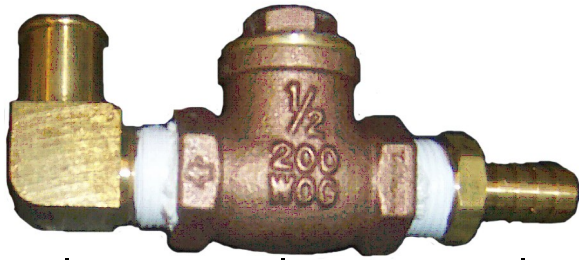
Key	Part Number	Description
1	ELE-207-500	Element, Electric Heating Cartridge, Immersion 120v 1500 Watt
2	ELE-800-108	Thermostat, Control VAC 185° F
3	ELE-000-614-FRU	Thermostat, High Limit VAC 215° F
4	ELE-HLT-425	Thermostat, High Limit 215°F
5	ELE-800-002	Switch Fluid Level Brass w/Connectors
6	ELE-014-005	Thermostat, Control 185°F 1/2 in (M) NPT
7	ELE-LTC-608	Thermostat, Low Temp Cut-Off w/Spade Connectors
8	HDE-700-205	Gasket, Combustion Chamber Tube

## SECTION 1: HEATER OVERVIEW - FRONT



Key	Part Number	Description
1	HDX-100-100	Grommet, Nylatch
2	HDX-100-200	Plunger, Nylatch
3	PLX-CTB-270	Clamp, Hose, Constant Tension, 3/4, AH/HH
4	PLX-100-835	Pump, Cooper Standard
5	PLX-100-836	Bracket, Cooper Pump Mounting

## SECTION 1: HEATER OVERVIEW - CHECK VALVES



1

2

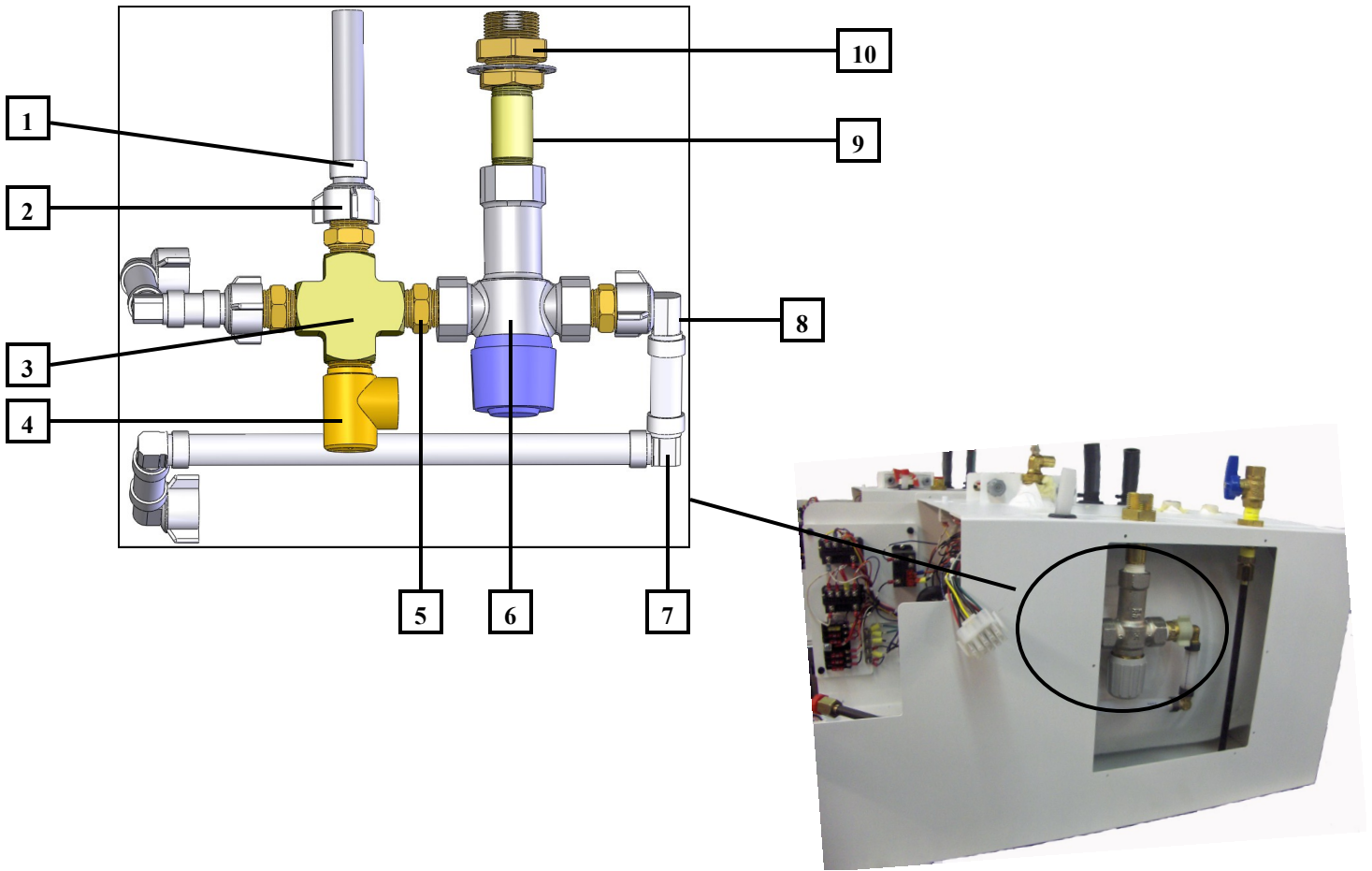
3



4

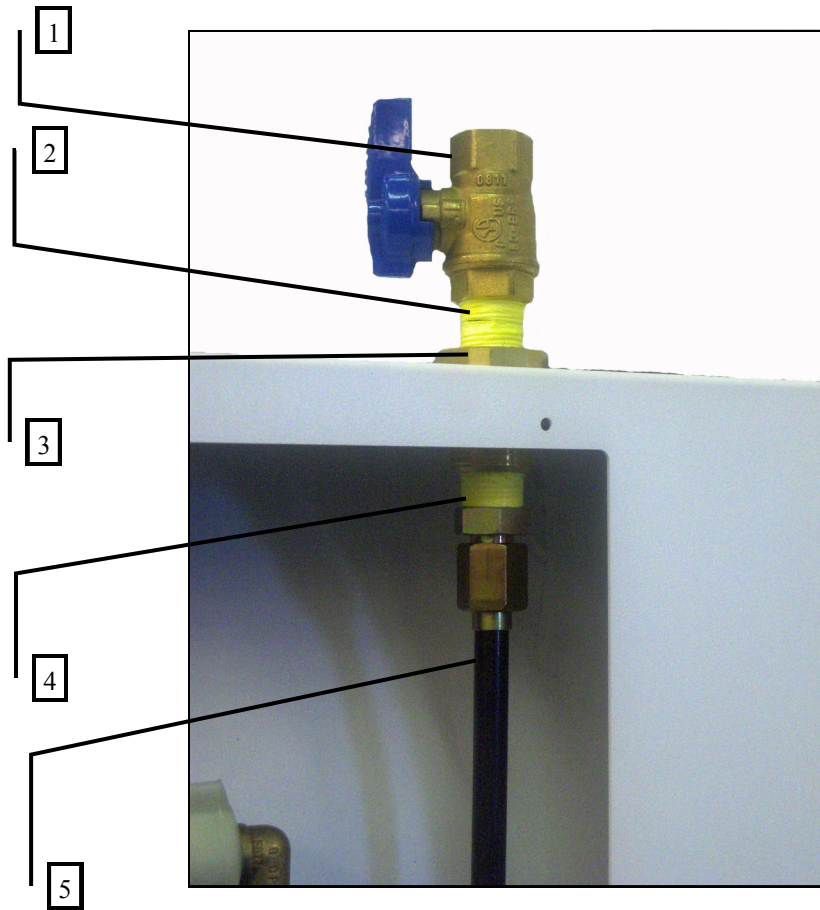
Key	Part Number	Description
1	PLX-A65-300	Fitting, Brass, Elbow, 90°, Barb 3/4 x 1/2 (M) NP
2	PLX-2A1-300	Valve, Brass Check, 1/2 X 1/2 (F)NPT
3	PLX-A65-200	Fitting, Brass, Barb, 3/4 X 1/2 (M)NPT
4	PLX-CTB-290	Clamp, Hose Band 1-1/16 in dia.

## SECTION 1: HEATER OVERVIEW - MIXER VALVE ASSEMBLY



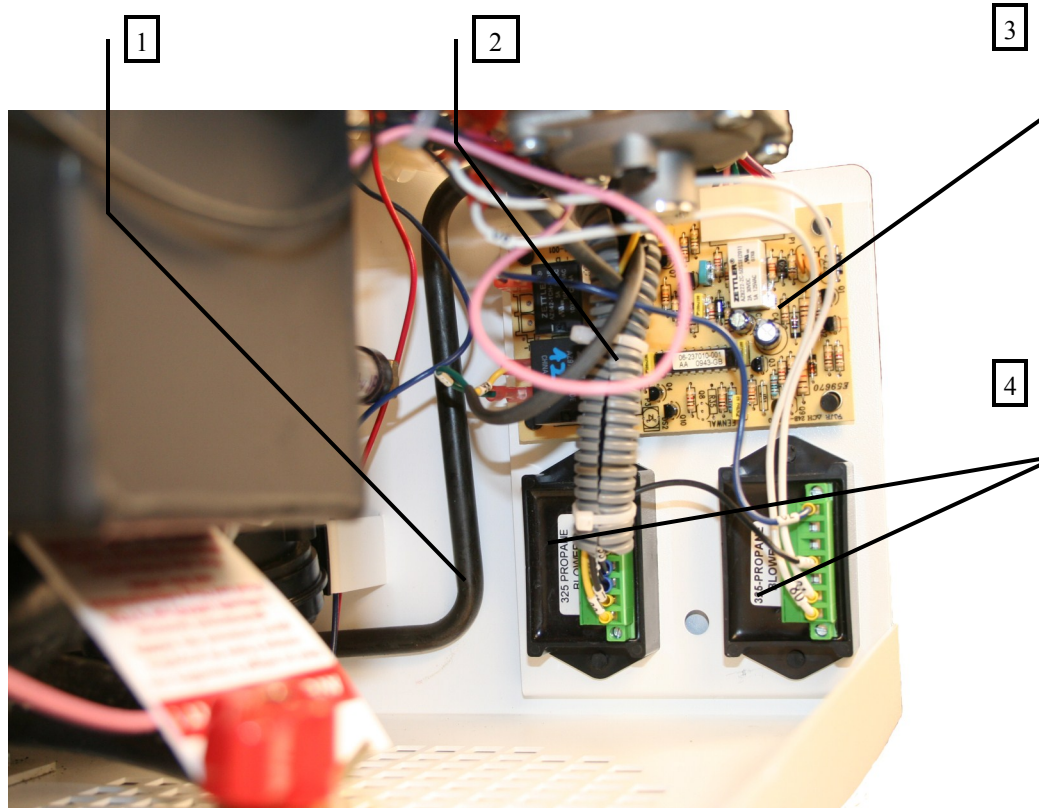
Key	Part Number	Description
1	PLX-000-745	Ring, Crimp 1/2 in
2	PLX-000-730	Fitting, Straight, Swivel 1/2 in Barb x 1/2 in FPT
3	PLX-000-725	Fitting, Cross 1/2 in Brass
4	PLX-111-125	Valve, Pressure Relief 125 PSI
5	PLX-122-000	Fitting, Brass, Close Nipple 1/2 (M)NPT w/Hex
6	PLX-09P-100	Valve, Tempering 145°F
7	PLX-000-750	Fitting, Elbow, 1/2 in Barb
8	PLX-000-755	Fitting, Elbow, Swivel 1/2 in Barb x 1/2 in FPT
9	PLX-113-250	Fitting, Nipple 1/2 in NPT x 2-1/2 in Brass
10	PLE-105-810	Fitting, Bulkhead Mod 1/2 x 1/2 (F)

## SECTION 1: HEATER OVERVIEW - PROPANE CONNECTION



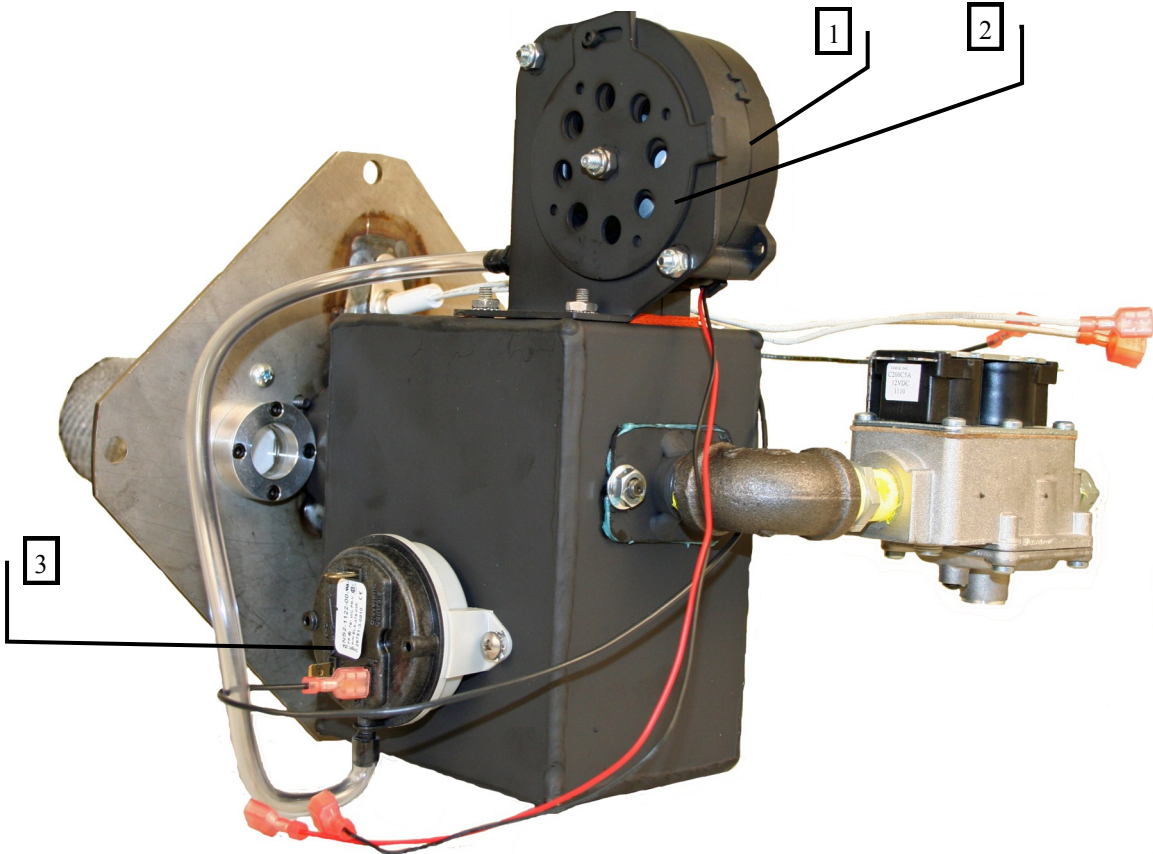
Key	Part Number	Description
1	PLX-375-050	Valve, Gas Ball
2	PLX-375-045	Nipple, Close, 3/8 in NPT (M) Brass
3	HDX-375-095	Fitting, Bulkhead 3/8 in x 3/8 in (F) NPT Brass
4	FLX-375-025	Fitting, #6 (M) JIC x 3/8 in (M) NPT Steel
5	FLE-421-853	Line, Fuel Assembly 3/8 in Steel

## SECTION 1: HEATER OVERVIEW - PROPANE BURNER CONTROLS



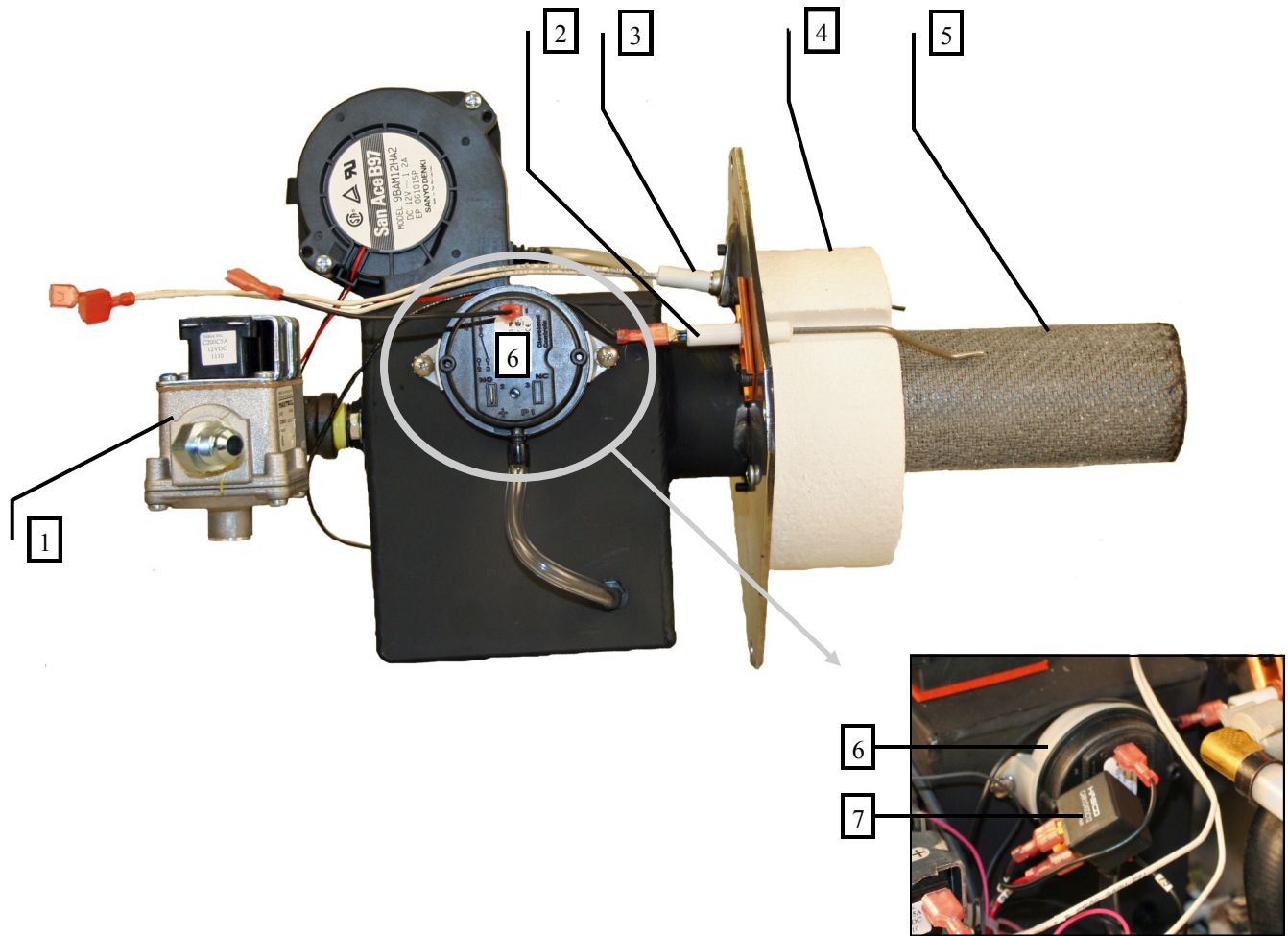
Key	Part Number	Description
1	FLE-421-853	Line, Fuel Assembly 3/8 in Steel
2	ELE-375-020	Harness, Burner
3	ELX-375-025	Card, Burner controller
4	ELE-375-015	Card, Buck Boost

**SECTION 2: PROPANE BURNER**



Key	Part Number	Description
1	ELX-375-020	Blower, Combustion
2	SME-375-025	Shutter, Air Intake
3	ELX-375-035	Switch, Pressure 376 WC

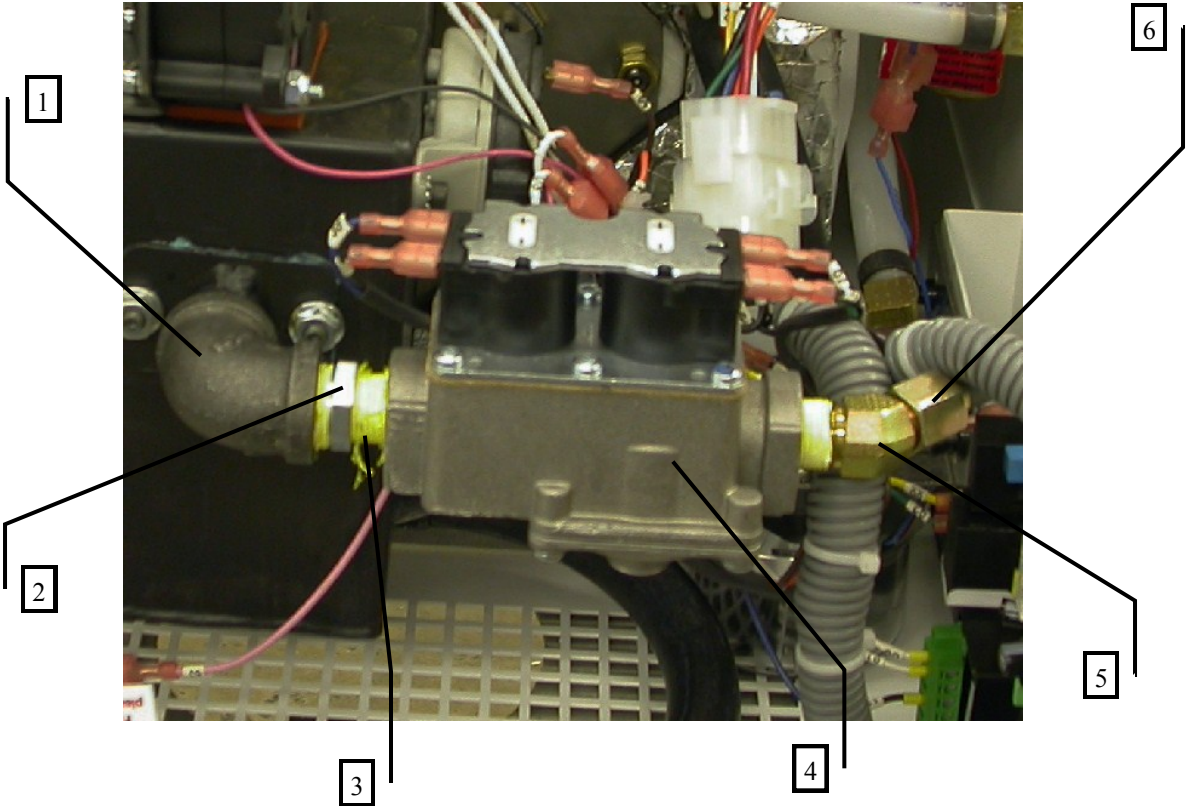
## SECTION 2: PROPANE BURNER



Key	Part Number	Description
1	PLX-375-010	Valve, Dual Gas
2	ELX-375-015	Sensor, Flame
3	ELX-375-030	Igniter, Flame
4	MSE-375-015	Insulation, Refractory
5	PBE-375-015	Tube, Mixing
6	ELX-375-010	Switch, Pressure .15 WC
7	ELX-375-040	Relay, Automotive 40A SPDT

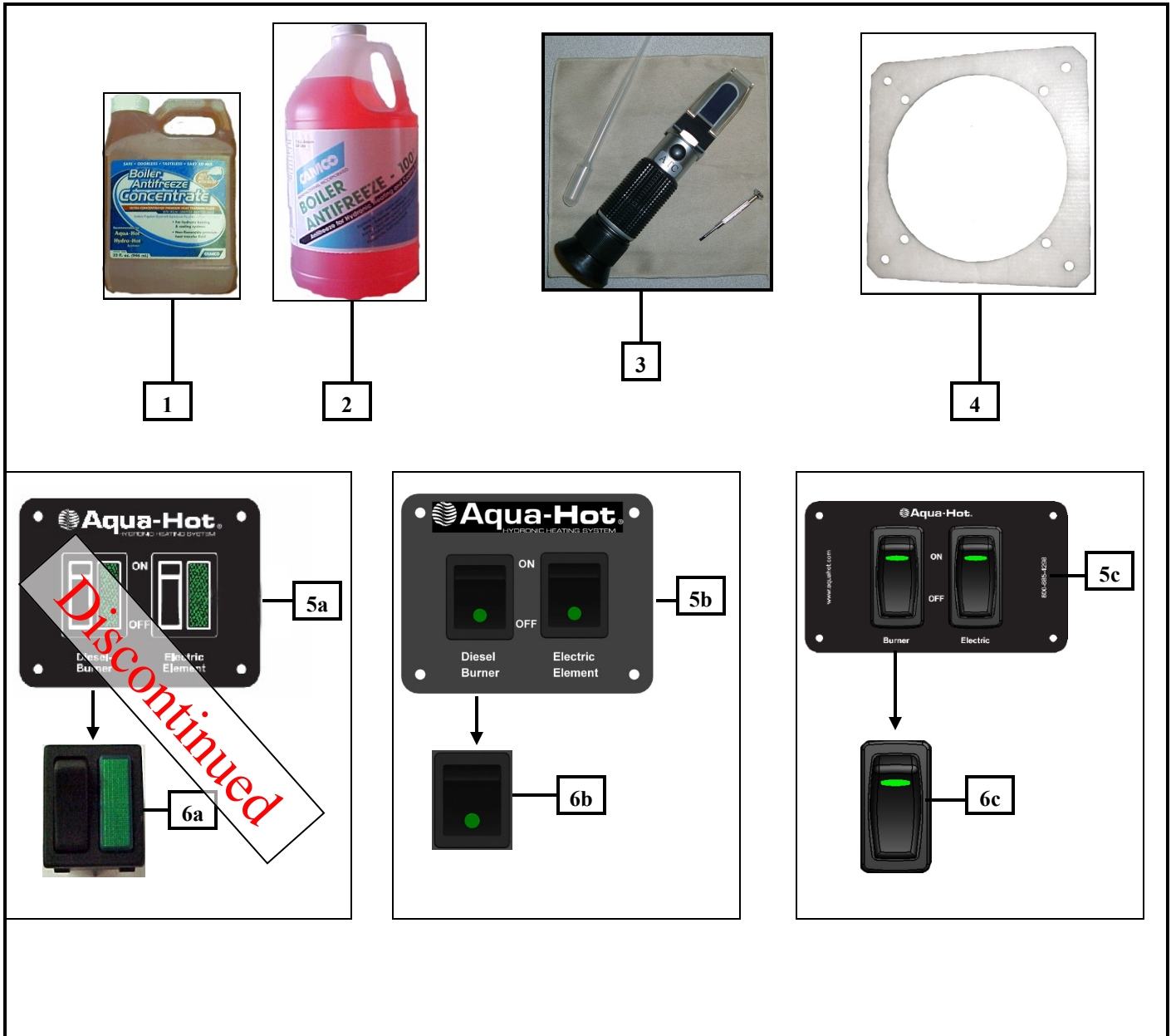


**SECTION 2: PROPANE BURNER**



Key	Part Number	Description
1	PLX-375-030	Elbow, 1/2 in NPT (F)
2	PLX-375-035	Bushing, 1/2 in NPT (M) x 3/8 in NPT (F)
3	PLX-375-045	Nipple, Close, 3/8 in NPT (M) Brass
4	PLX-375-010	Valve, Dual Gas
5	FLX-375-020	Fitting, #6 (M) JIC x 3/8 in (M) NPT 45° Steel
6	FLE-421-853	Line, Fuel Assembly 3/8 in Steel

## SECTION 3: MISC. PARTS



Key	Part Number	Date of Use	Description
1	MSX-300-275		Antifreeze, Boiler, P.G., 1 qt, Concentrate, (Camco)
2	MSX-300-270		Antifreeze, Boiler, P.G, 1 Gallon (Camco)
3	MSX-907-162		Tester, Refractometer, Battery/Coolant
4	HDE-700-205		Gasket, Combustion Chamber Tube
5a	ELE-000-506	09/2010 - 12/2010	Switch, 2-Postion Assembly, LED - OBSOLETE
5b	ELE-000-506	01/2011 - 08/2011	Switch, 2-Postion Assembly, LED
5c	ELE-000-508	09/2011 - Current	Switch, 2-Postion Assembly, LED
6a	ELX-283-284	09/2010 - 12/2010	Switch, Rocker, LED, 12 VDC - OBSOLETE
6b	ELX-283-284	01/2011 - 08/2011	Switch, Rocker, LED, 12 VDC
6c	ELX-283-283	09/2011 - Current	Switch, Rocker, LED, 12 VDC





PROPANE  
**Aqua-Hot**®  
HYDRONIC HEATING SYSTEM

**375-LP**

# **AHE-375-P02**

# **Parts Manual**



**Aqua-Hot**®  
HEATING SYSTEMS INC.

15549 East Highway 52 | Fort Lupton, CO 80621  
Toll free: 800.685.4298 | phone: 303.659.8221 | fax: 303.857.7881  
[www.aquahot.com](http://www.aquahot.com)